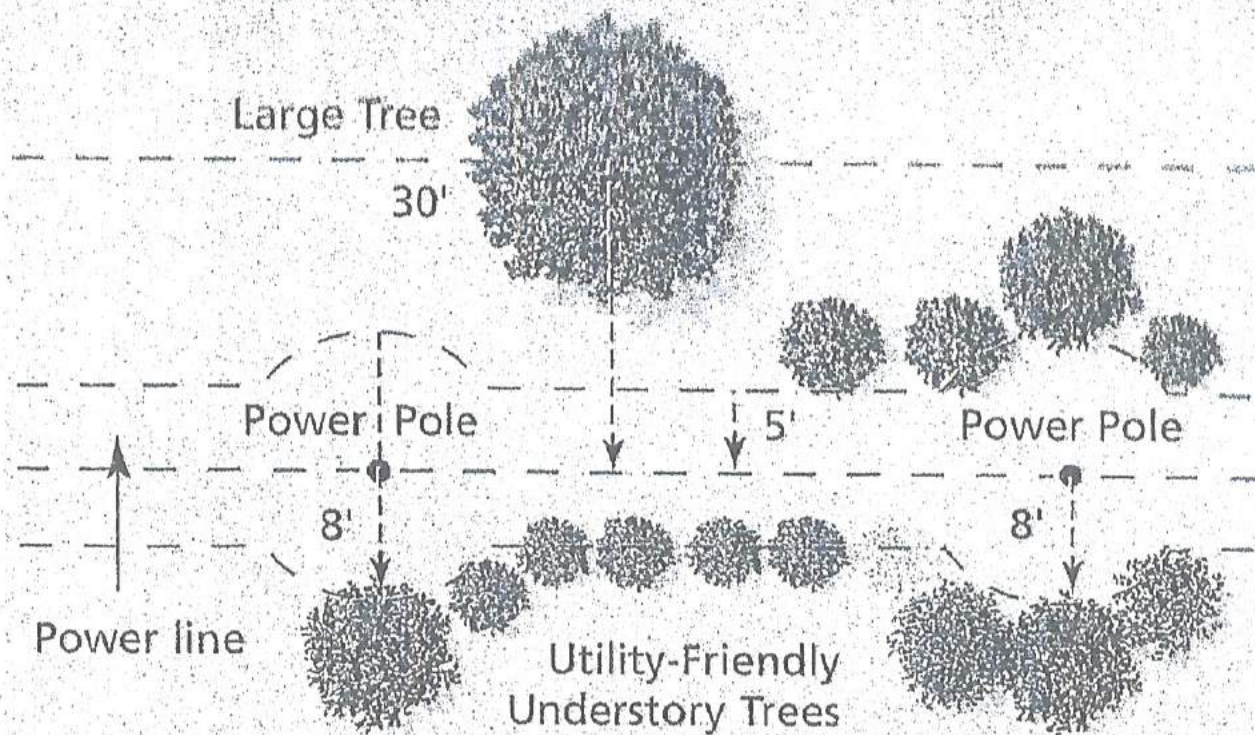


## Planting Near Utility Lines

Plant only utility-friendly trees (mature height of 20 feet or less) within 15 feet of utility lines; no closer than 8 feet to power poles; and 5 feet from center of utility easement when access to utility is limited.



Some narrow-shaped trees may be able to survive closer than 30 feet to utility lines without creating a conflict, but in no case should trees that grow to or above utility lines be planted closer than a distance equal to one-half their mature spread.

Suggested tree setbacks from power lines are for typical overhead residential distribution lines and do not apply to high-voltage transmission rights-of-way.